
I-85 Extension Socioeconomic Analysis

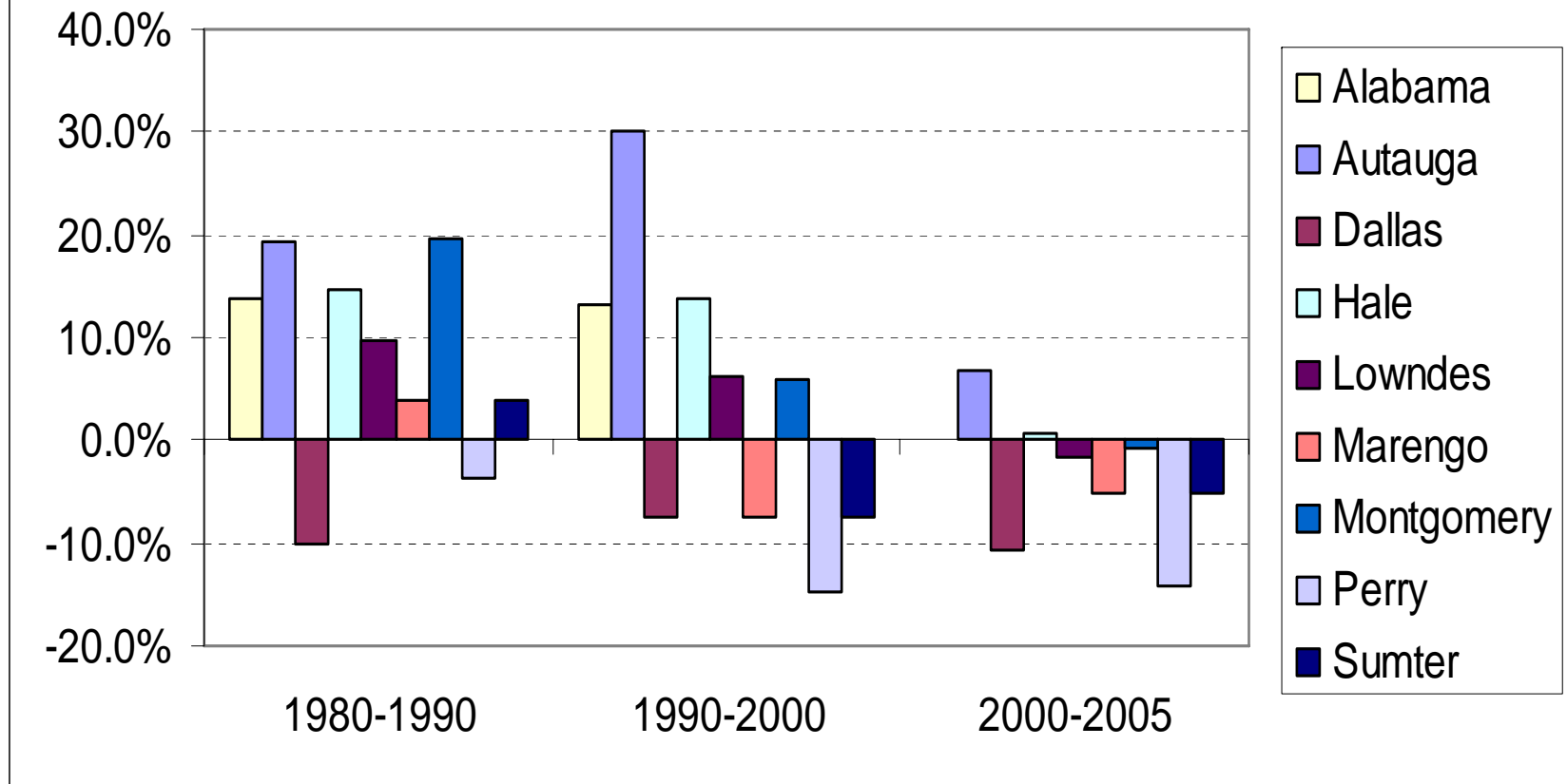
**Existing Condition Review
Economic Forecasts
Population projections**

**Center for Business and Economic Research
The University of Alabama**

Hayneville, Alabama

October 20, 2006

Civilian Labor Force Changes, 1980-2005



Civilian Labor Force, 1980 to 2005

	1980	1990	2000	2005
Alabama	1,672,990	1,903,250	2,154,545	2,154,897
Autauga	14,130	16,875	21,954	23,454
Dallas	21,500	19,345	17,926	16,006
Hale	5,390	6,185	7,033	7,087
Lowndes	4,360	4,787	5,089	4,999
Marengo	9,450	9,816	9,095	8,626
Montgomery	84,160	100,751	106,838	105,984
Perry	5,010	4,828	4,120	3,530
Sumter	9,450	9,816	9,095	8,626

Source: Alabama Department of Industrial Relations

County Labor Supply

Unemployment is at historic lows, but the counties have available labor pools that range between 4.5 and 13.4 times the number of unemployed workers, because of the presence of large numbers of underemployed workers who are looking for better jobs.

The underemployed are willing to commute farther and longer, some for 20 or more minutes longer and 20 or more extra miles.

	Autauga	Dallas	Hale	Lowndes
Labor Force	23,366	15,733	7,096	4,961
Employed	22,773	14,786	6,818	4,658
Underemployment rate	32.3%	25.9%	19.6%	22.6%
Underemployed workers	7,356	3,830	1,336	1,053
Unemployed	593	947	278	303
Available labor pool	7,949	4,777	1,614	1,356

Note: Based on March 2006 labor force data.

Source: Center for Business and Economic Research, The University of Alabama; and Labor Market Information Division, Alabama Department of Industrial Relations.

County Labor Supply

Unemployment is at historic lows, but the counties have available labor pools that range between 4.5 and 13.4 times the number of unemployed workers, because of the presence of large numbers of underemployed workers who are looking for better jobs.

The underemployed are willing to commute farther and longer, some for 20 or more minutes longer and 20 or more extra miles.

	Marengo	Montgomery	Perry	Sumter
Labor Force	8,733	105,508	3,445	4,870
Employed	8,408	102,007	3,237	4,622
Underemployment rate	19.0%	30.4%	35.2%	20.4%
Underemployed workers	1,598	31,010	1,139	943
Unemployed	325	3,501	208	248
Available labor pool	1,923	34,511	1,347	1,191

Note: Based on March 2006 labor force data.

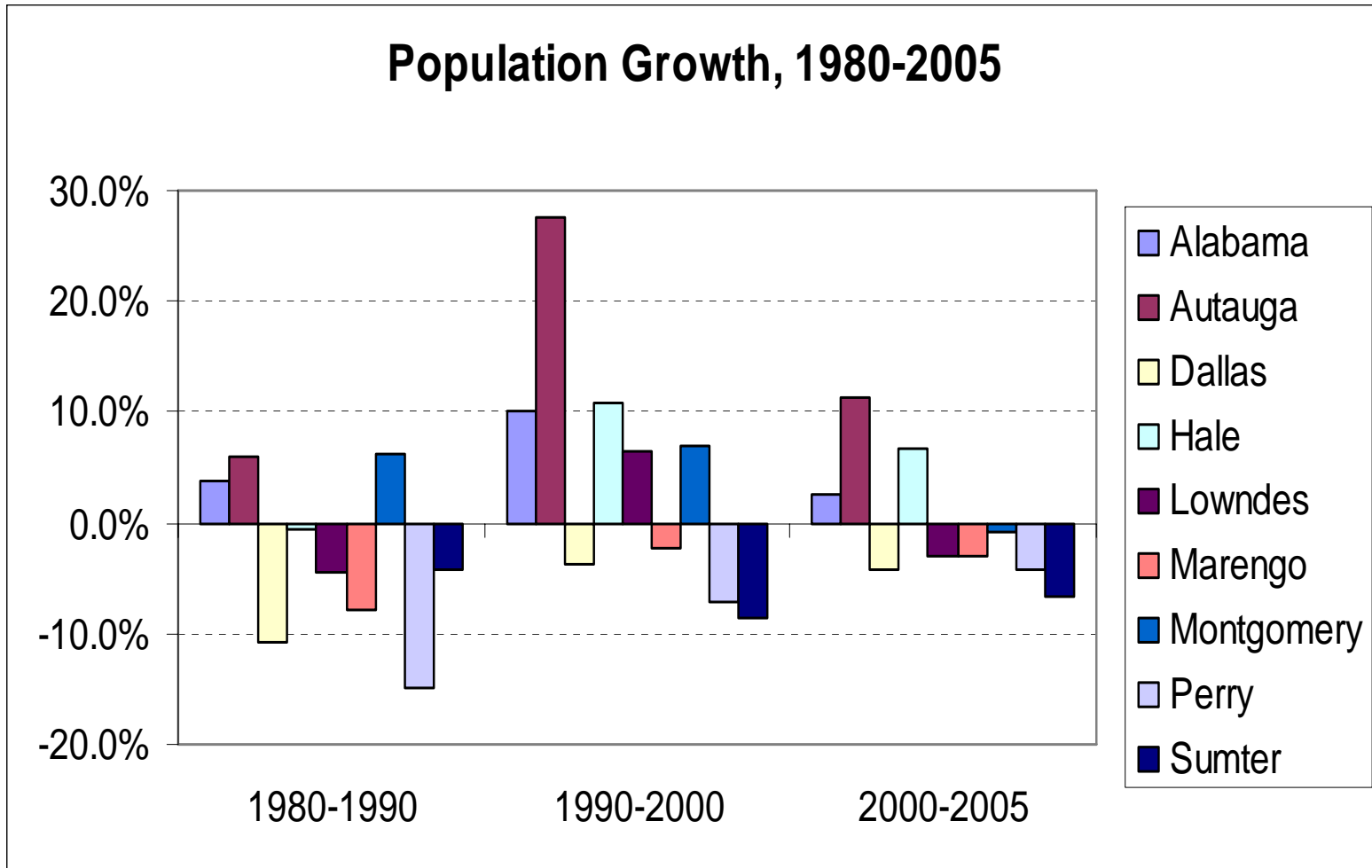
Source: Center for Business and Economic Research, The University of Alabama; and Labor Market Information Division, Alabama Department of Industrial Relations.

Educational Attainment

	<u>1990</u>		<u>2000</u>	
	High School or Higher	Bachelor's Degree or Higher	High School or Higher	Bachelor's Degree or Higher
U.S.	75.2%	20.3%	80.4%	24.4%
Alabama	66.9%	15.7%	75.3%	19.0%
Autauga	70.0%	14.5%	78.7%	18.0%
Dallas	59.6%	12.2%	70.3%	13.9%
Hale	54.4%	8.9%	65.2%	8.1%
Lowndes	56.7%	8.2%	64.3%	11.0%
Marengo	61.4%	11.5%	71.9%	12.1%
Montgomery	75.3%	24.2%	80.3%	28.5%
Perry	51.0%	11.5%	62.4%	10.0%
Sumter	52.4%	11.1%	64.8%	12.4%

Source: U.S. Census Bureau

Population Growth, 1980-2005

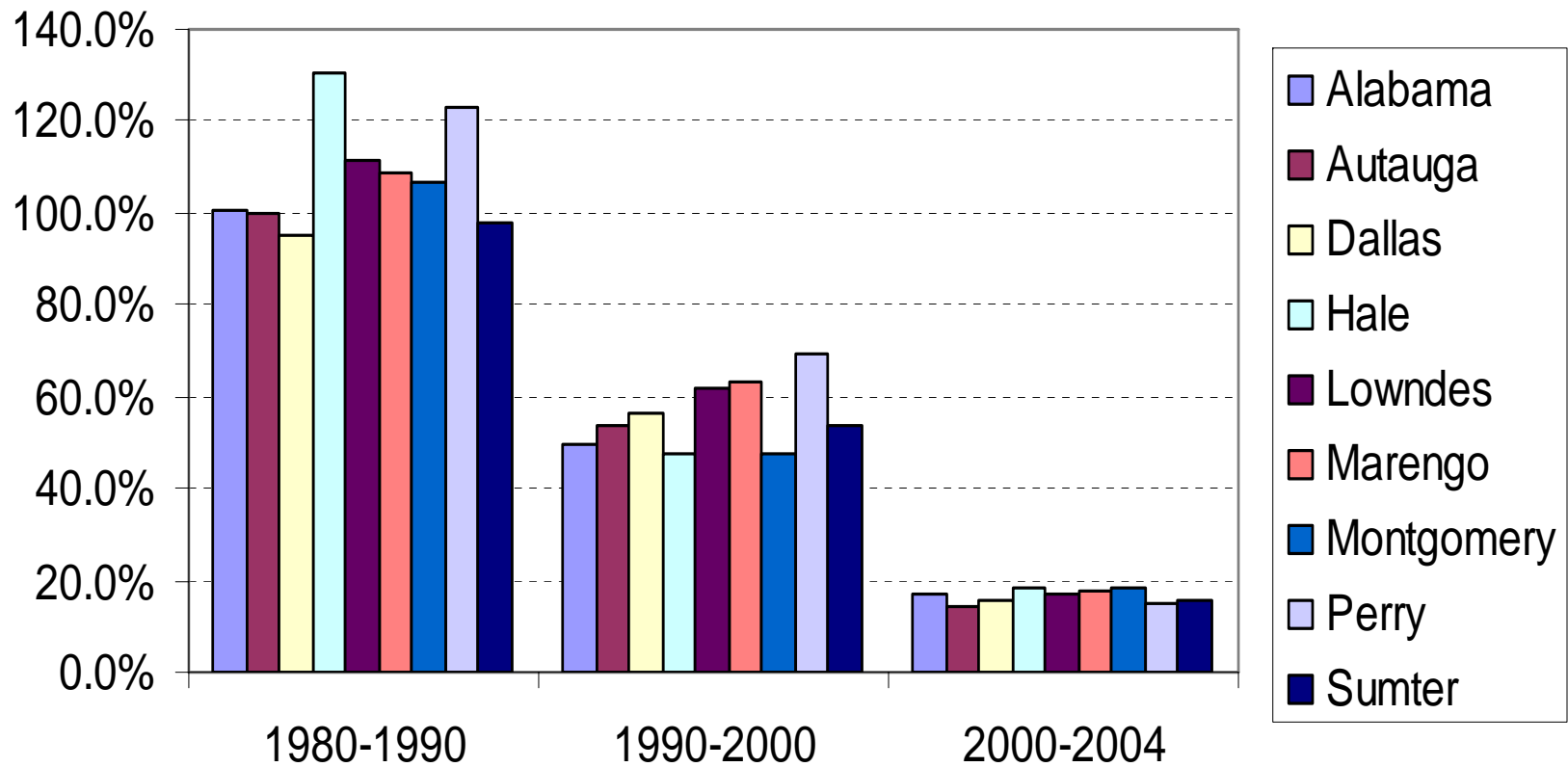


Population, 1980 to 2005

	1980	1990	2000	2005
Alabama	3,893,888	4,040,587	4,447,100	4,557,808
Autauga	32,259	34,222	43,671	48,612
Dallas	53,981	48,130	46,365	44,366
Hale	15,604	15,498	17,185	18,316
Lowndes	13,253	12,658	13,473	13,076
Marengo	25,047	23,084	22,539	21,879
Montgomery	197,038	209,085	223,510	221,619
Perry	15,012	12,759	11,861	11,371
Sumter	16,908	16,174	14,798	13,819

Source: U.S. Census Bureau

Per Capita Income Growth



Per Capita Income, 1980 to 2004

	1980	1990	2000	2004
Alabama	\$7,892	\$15,826	\$23,694	\$27,695
Autauga	\$7,489	\$14,959	\$23,018	\$26,228
Dallas	\$6,308	\$12,301	\$19,247	\$22,302
Hale	\$4,784	\$11,021	\$16,292	\$19,324
Lowndes	\$5,102	\$10,779	\$17,478	\$20,438
Marengo	\$6,256	\$13,045	\$21,304	\$25,034
Montgomery	\$8,944	\$18,505	\$27,256	\$32,325
Perry	\$4,475	\$9,981	\$16,894	\$19,405
Sumter	\$5,420	\$10,732	\$16,508	\$19,093

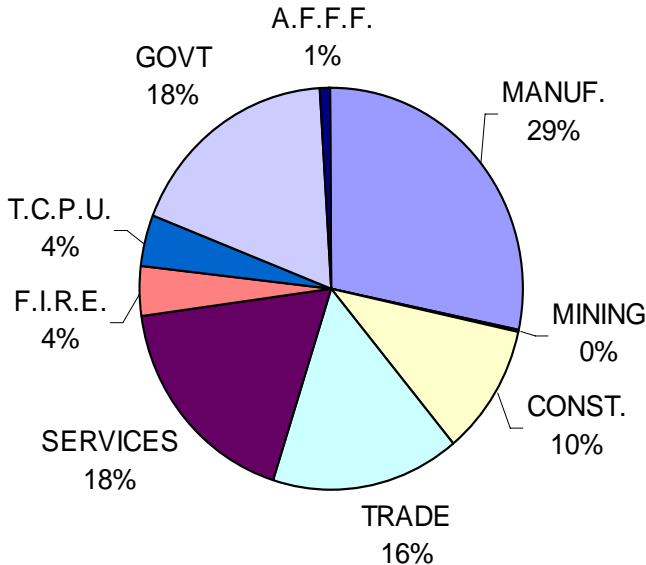
Source: U.S. Department of Commerce, Bureau of Economic Analysis

Firms by Employment Size, 2005

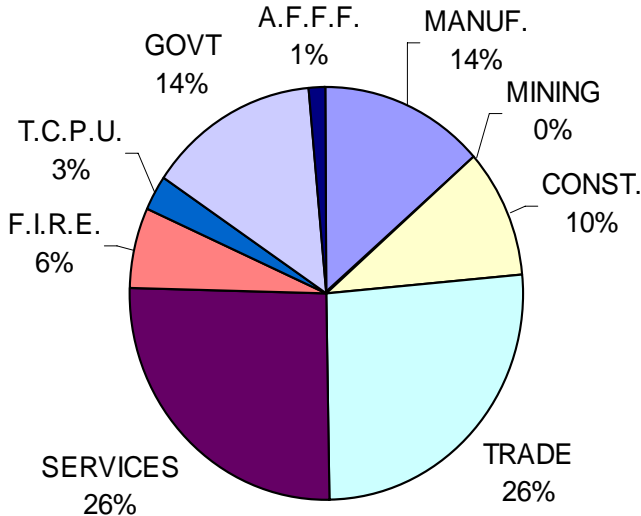
	Autauga	Dallas	Hale	Lowndes	Marengo	Montgomery	Perry	Sumter
1 to 4	1019	1,036	325	183	529	5704	209	299
5 to 9	225	238	51	38	150	1590	35	63
10 to 19	103	124	41	19	69	994	19	44
20 to 49	73	105	28	22	43	808	13	30
50 to 99	30	33	4	4	12	254	6	7
100 to 249	15	22	7	5	12	159	3	6
250 to 499	3	5	1	3	3	55	3	1
500 to 999	2	5	0	0	1	22	0	0
1,000 to 4,999	1	1	0	0	0	7	0	0
5,000 to 9,999	0	0	0	0	0	0	0	0
10,000+	0	0	0	0	0	1	0	0
NA	181	148	50	29	73	961	16	43
Total	1652	1,717	507	303	892	10,555	304	493

Autauga County, 2003

Autauga County Real Output - \$376.4 M

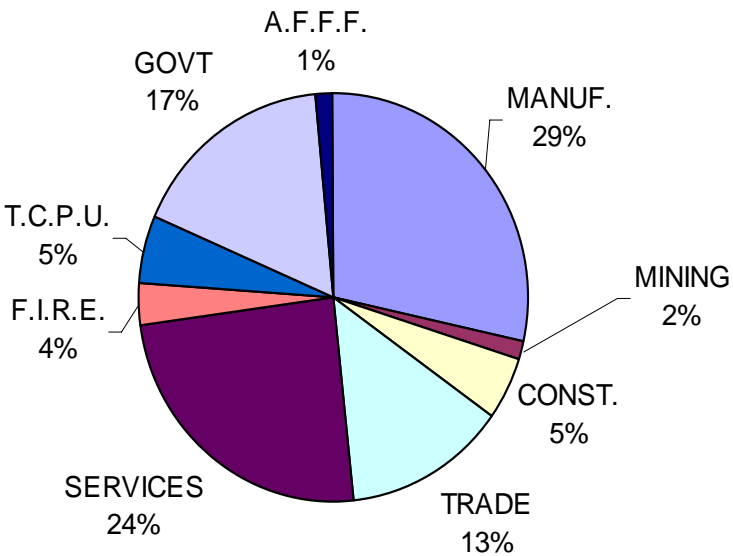


Autauga County Employment - 15,788

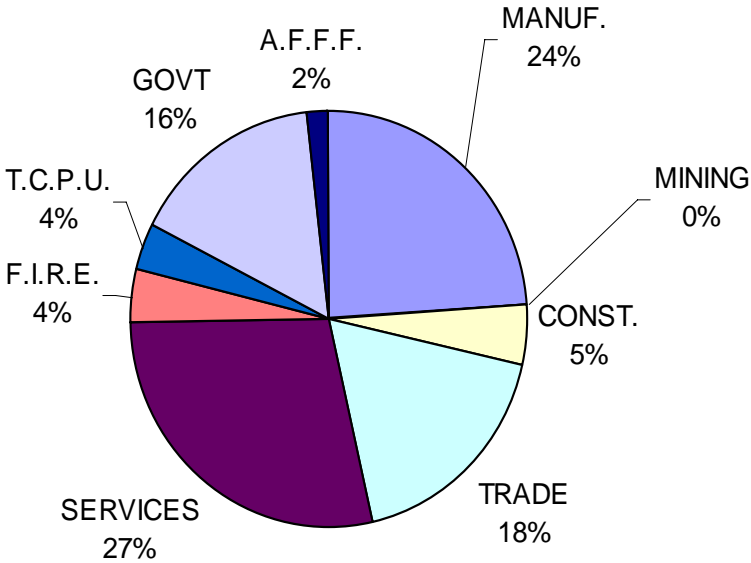


Dallas County, 2003

Dallas County Real Output - \$556.7 M

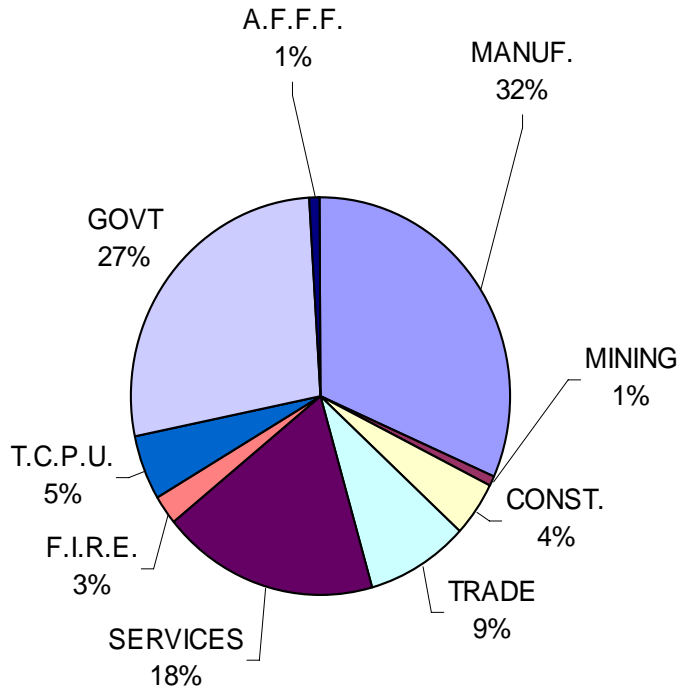


Dallas County Employment - 21,971

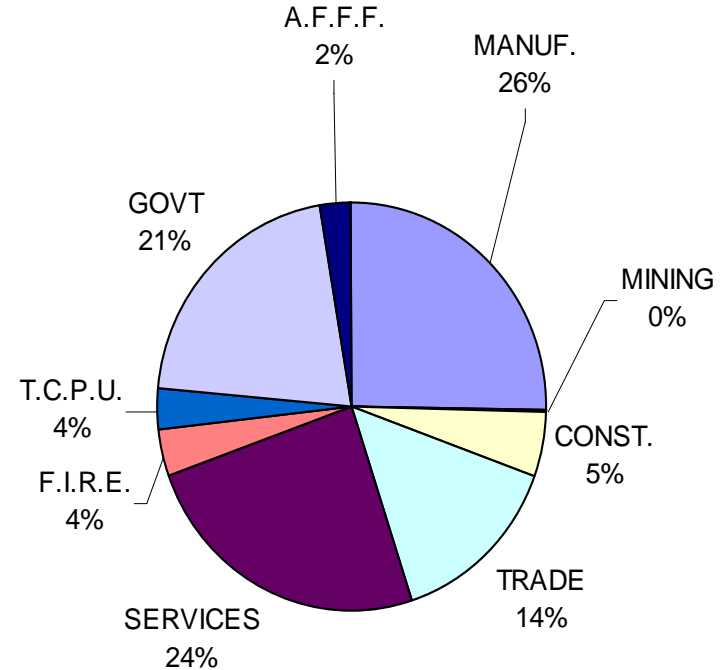


Hale County, 2003

Hale County Real Output - \$115.9 M

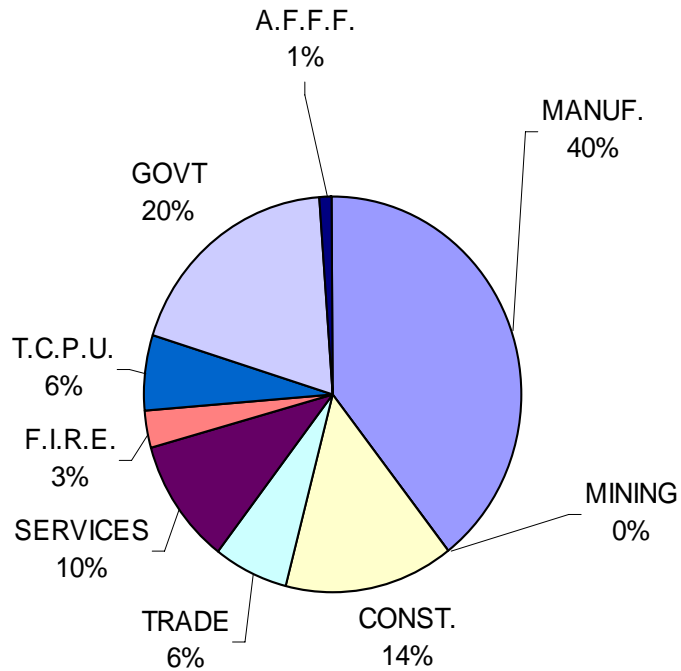


Hale County Employment - 5,388

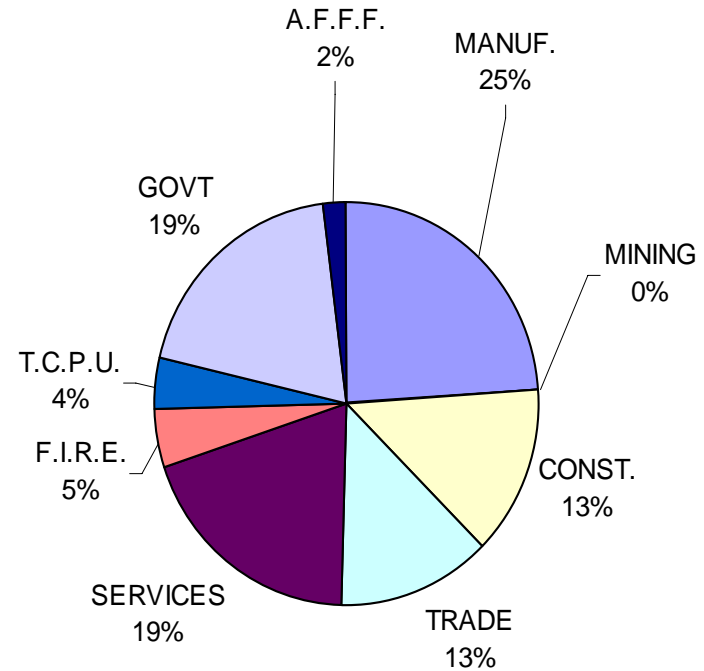


Lowndes County, 2003

Lowndes County Real Output - \$112.4 M

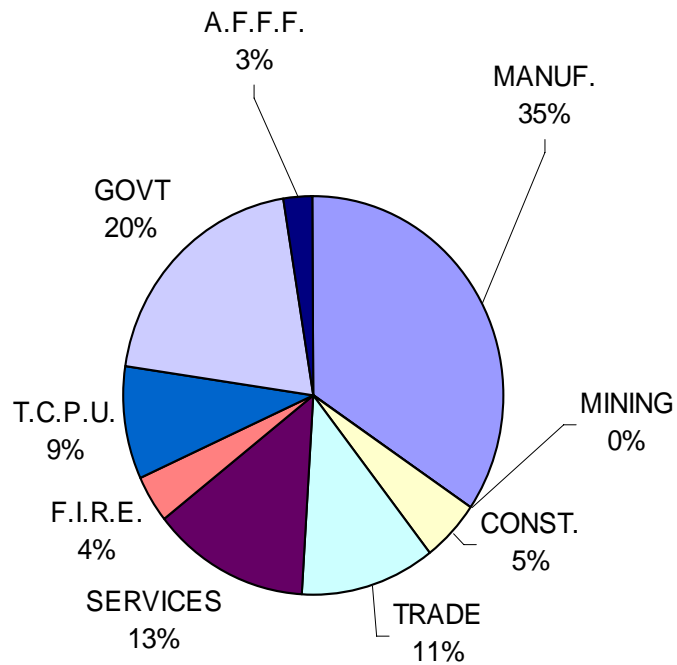


Lowndes County Employment - 4,102

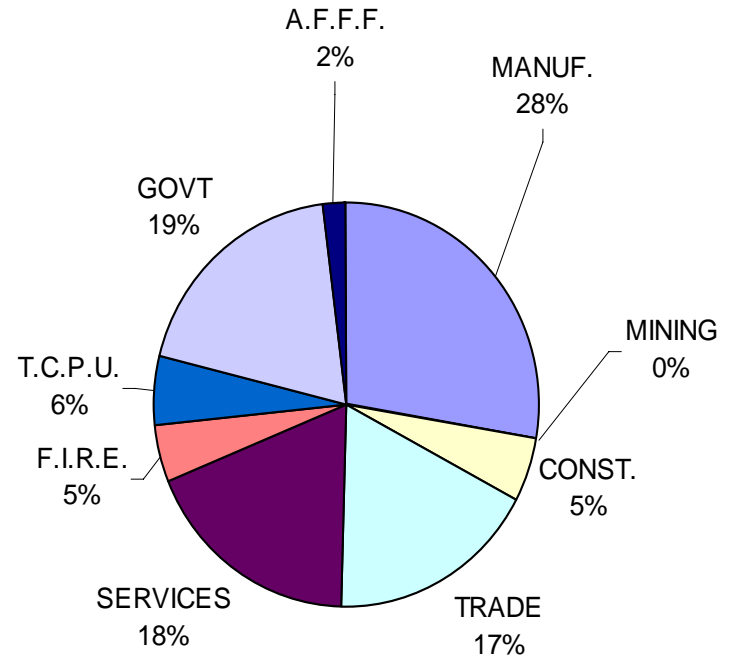


Marengo County, 2003

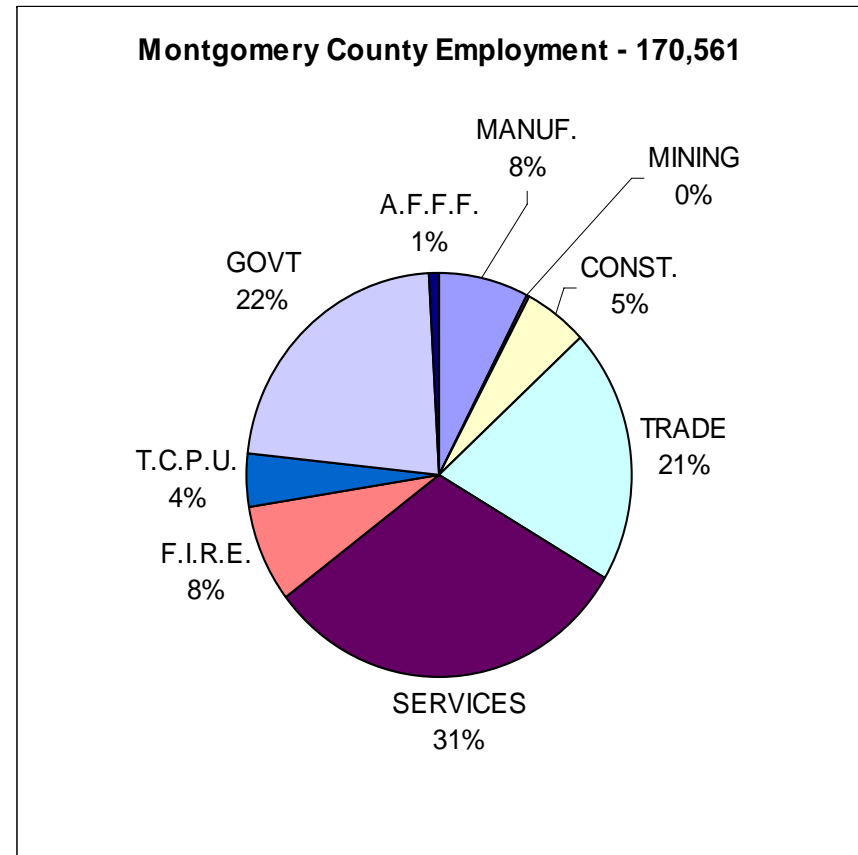
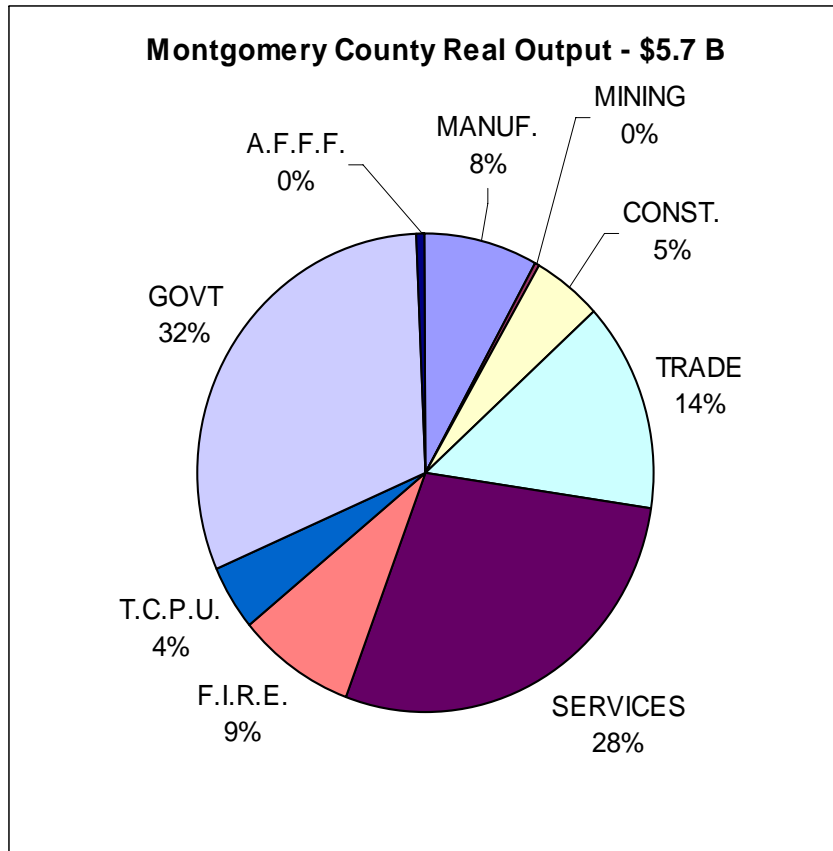
Marengo County Real Output - \$278.3 M



Marengo County Employment - 10,447

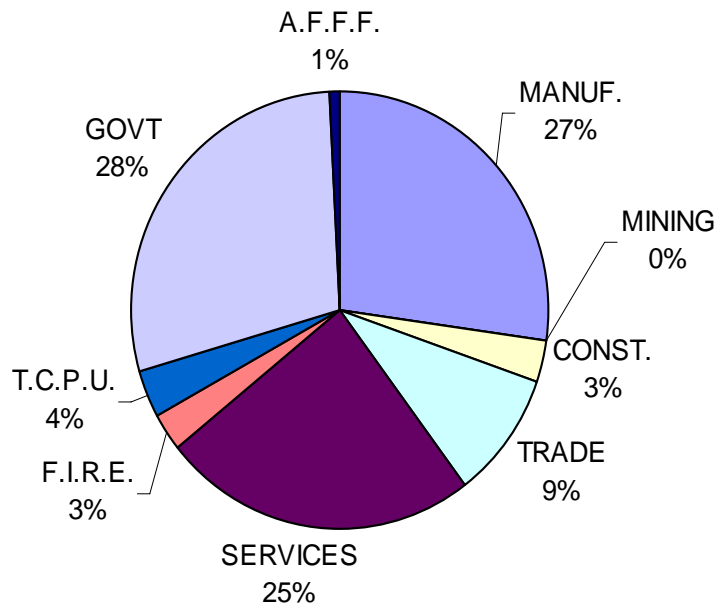


Montgomery County, 2003

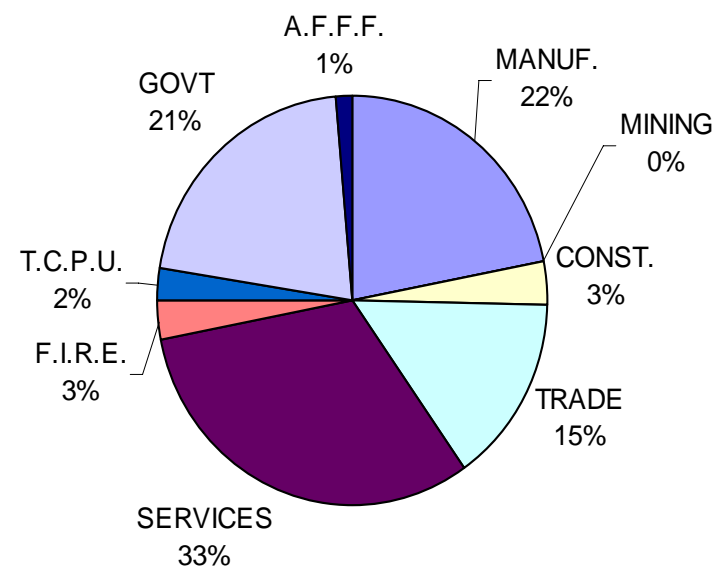


Perry County, 2003

Perry County Real Output - \$74.3 M

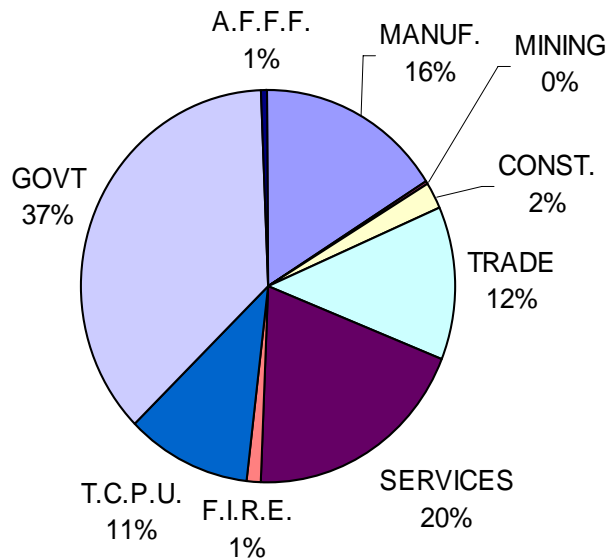


Perry County Employment - 3,537

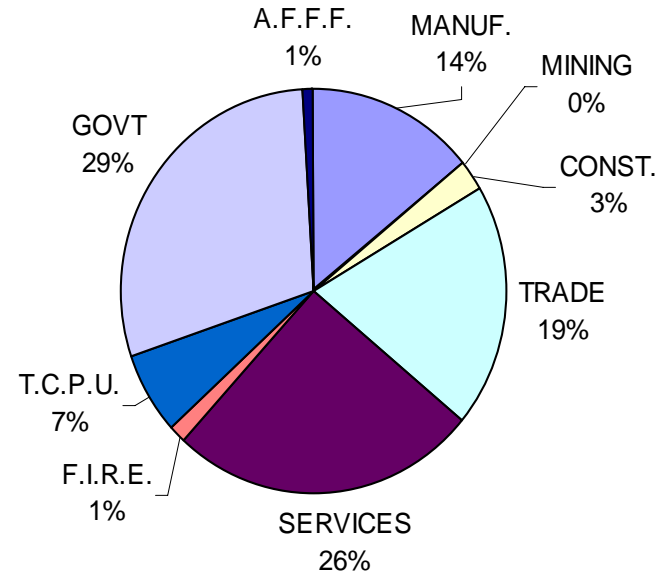


Sumter County, 2003

Sumter County Real Output - \$120.4 M



Sumter County Employment - 5,339



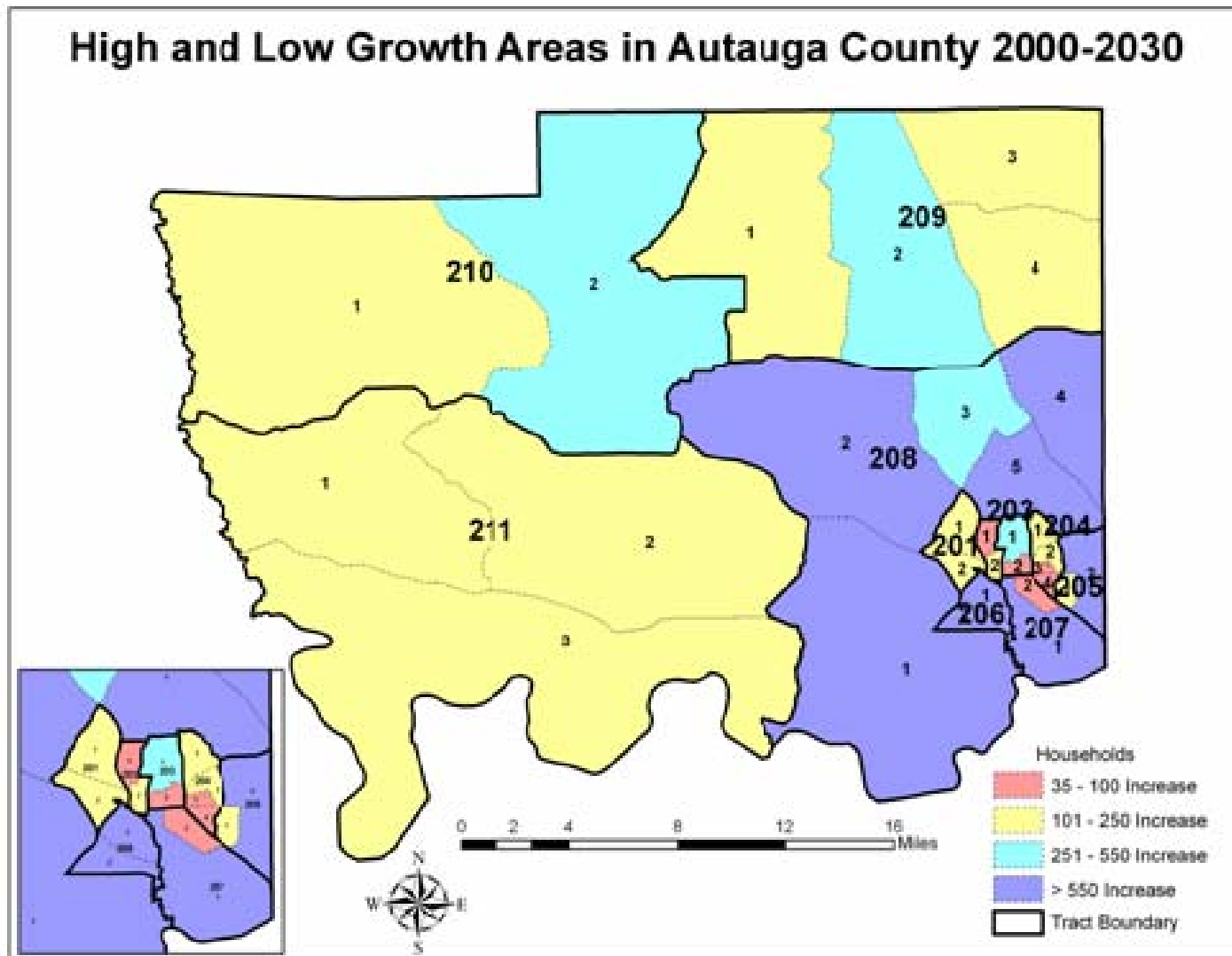
Economic Forecasts

<u>County</u>	Output (\$Millions, 1996)			Employment (Jobs)		
	<u>2000</u>	<u>2030</u>	<u>Change</u>	<u>2000</u>	<u>2030</u>	<u>Change</u>
Autauga	361	721	99.6%	15,511	27,163	75.1%
Dallas	555	847	52.7%	22,145	30,096	35.9%
Hale	113	294	159.2%	5,335	7,803	46.3%
Lowndes	111	261	135.7%	3,985	6,269	57.3%
Marengo	279	555	99.0%	10,431	16,523	58.4%
Perry	74	113	52.5%	3,572	4,428	24.0%
Sumter	123	194	57.7%	5,330	8,339	56.5%
Alabama	112,295	229,019	103.9%	1,931,192	2,653,757	37.4%

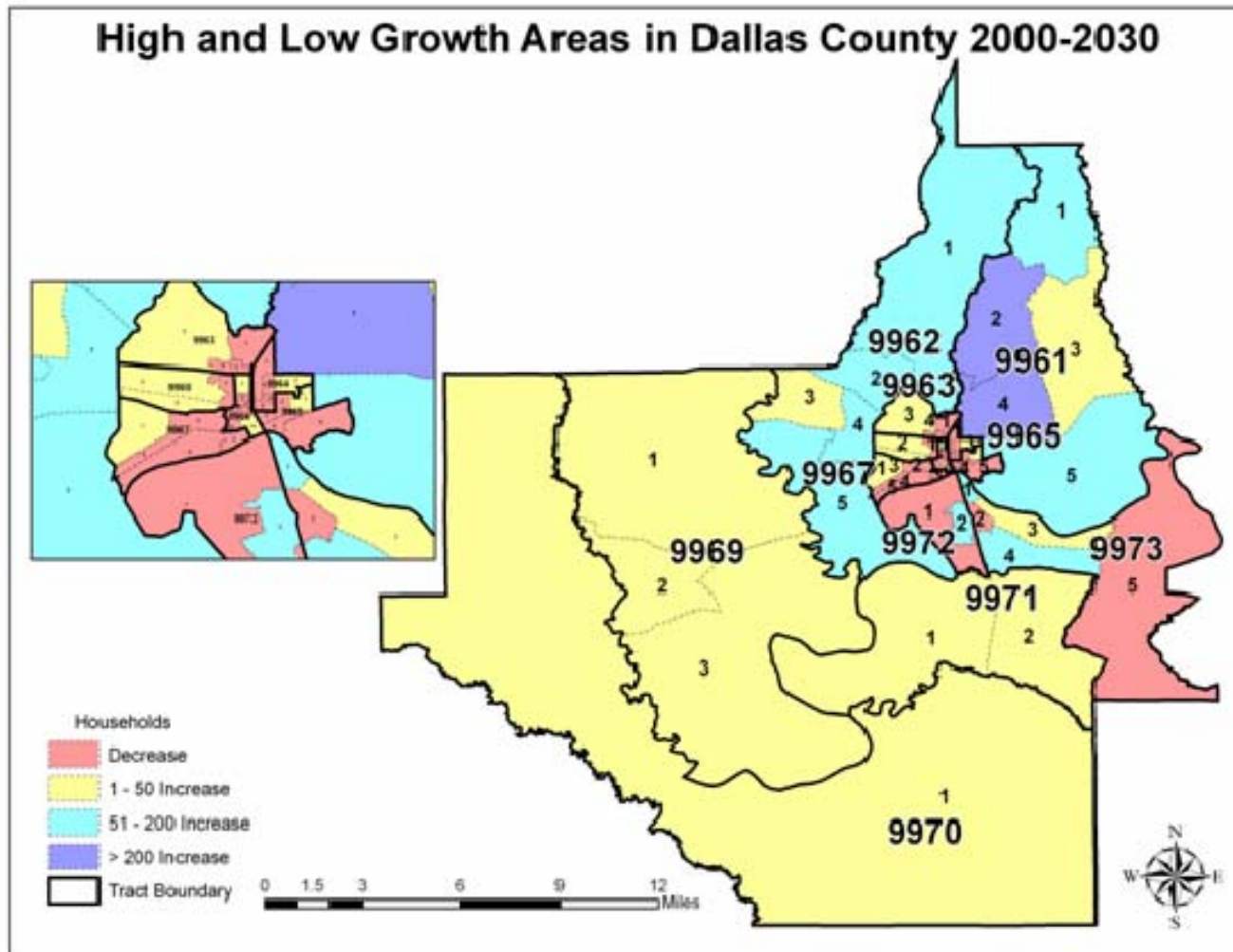
Population Projections

County	2000	Baseline			I-85 Development	
		2030	Change		2030	Change
Autauga	43,671	73,467	29,796		74,337	30,666
Dallas	46,365	46,498	133		49,163	2,798
Hale	17,185	20,583	3,398		21,356	4,171
Lowndes	13,473	14,892	1,419		15,499	2,026
Marengo	22,539	21,905	-634		23,869	1,330
Perry	11,861	11,365	-496		12,156	295
Sumter	14,798	13,101	-1,697		14,379	-419
Total	169,892	201,811	31,919		210,759	40,867

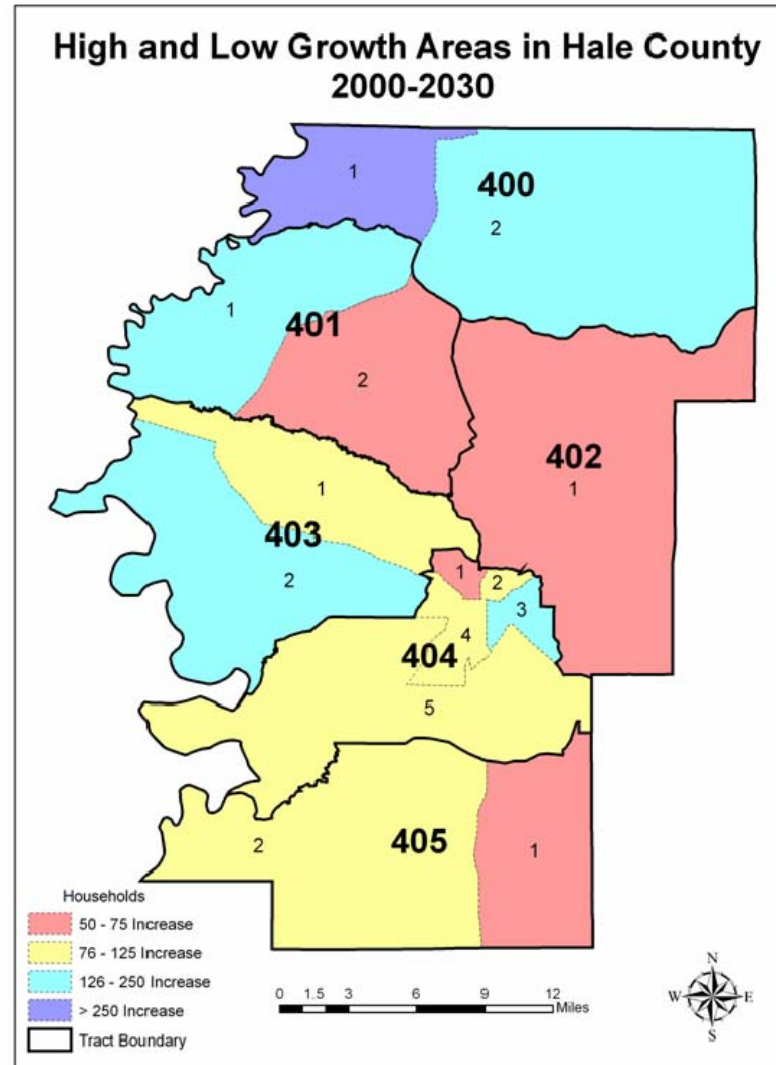
Population Projections – Autauga County



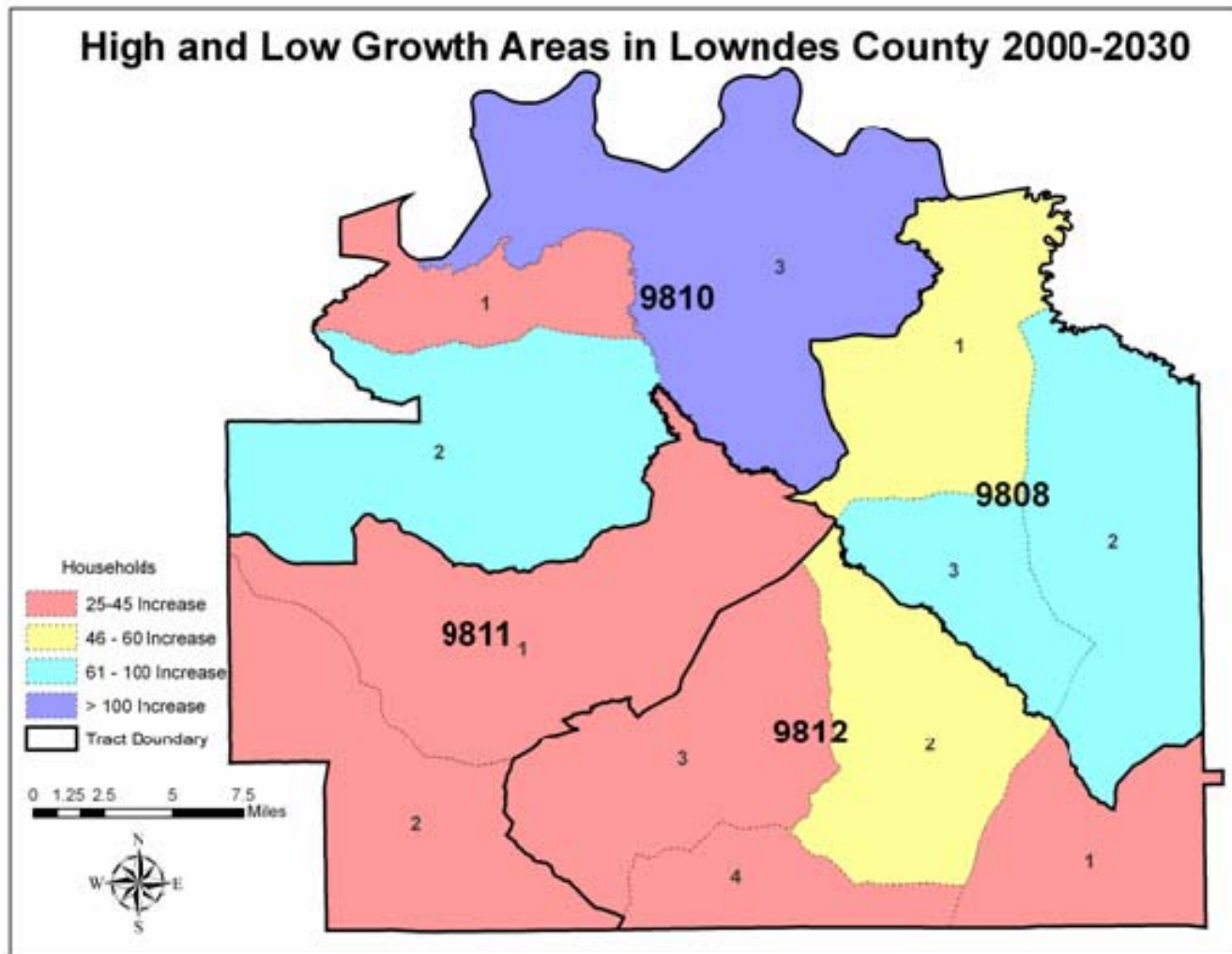
Population Projections – Dallas County



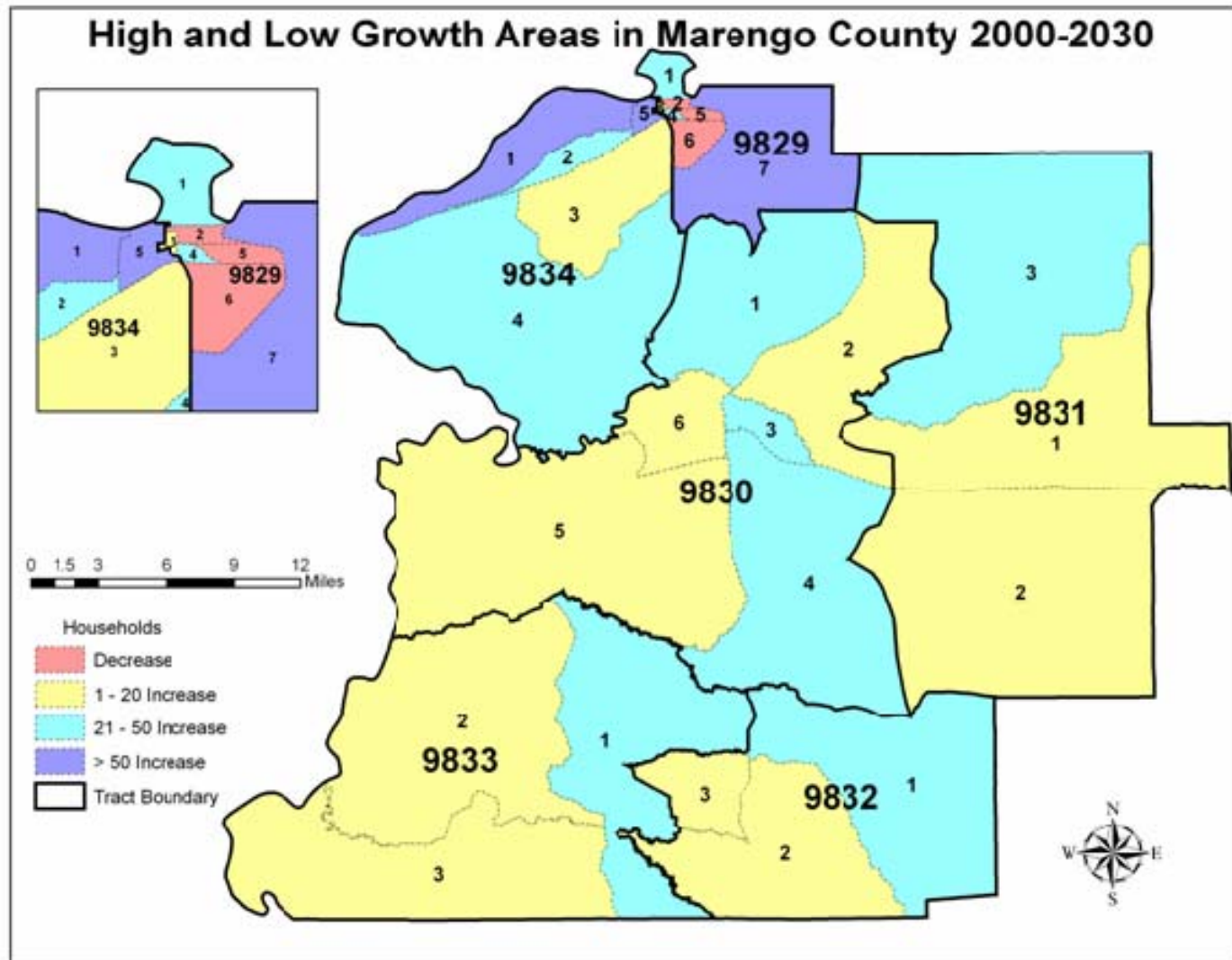
Population Projections – Hale County



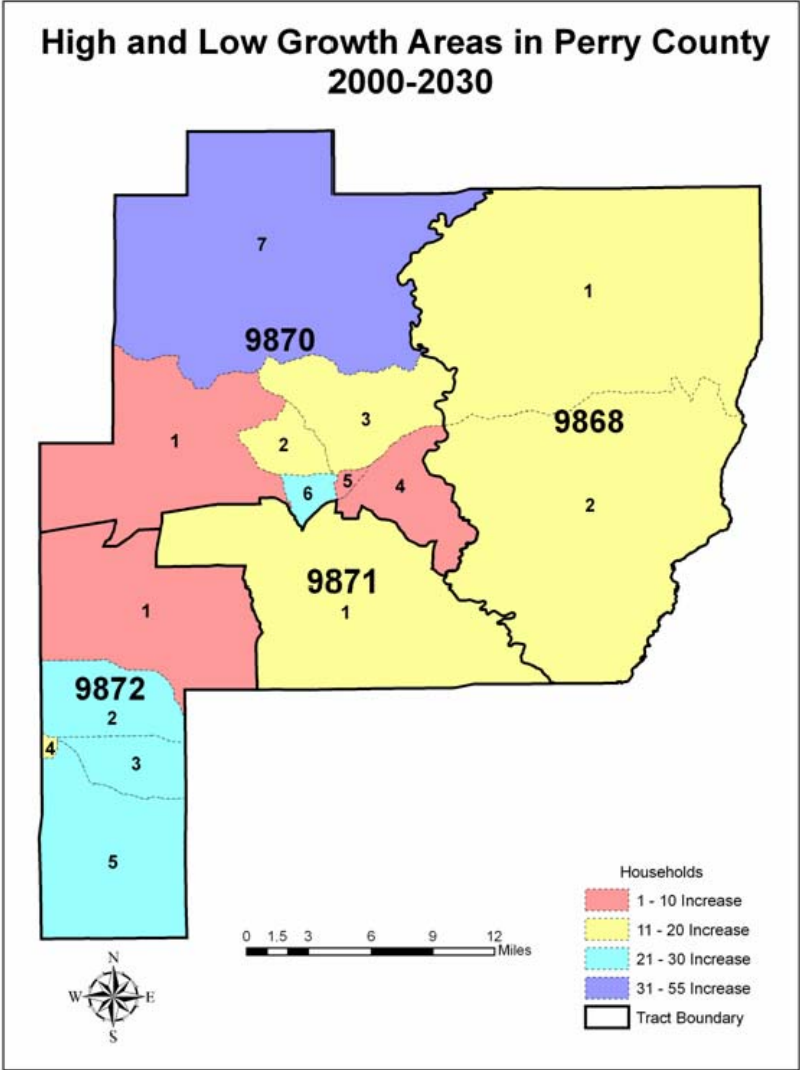
Population Projections – Lowndes County



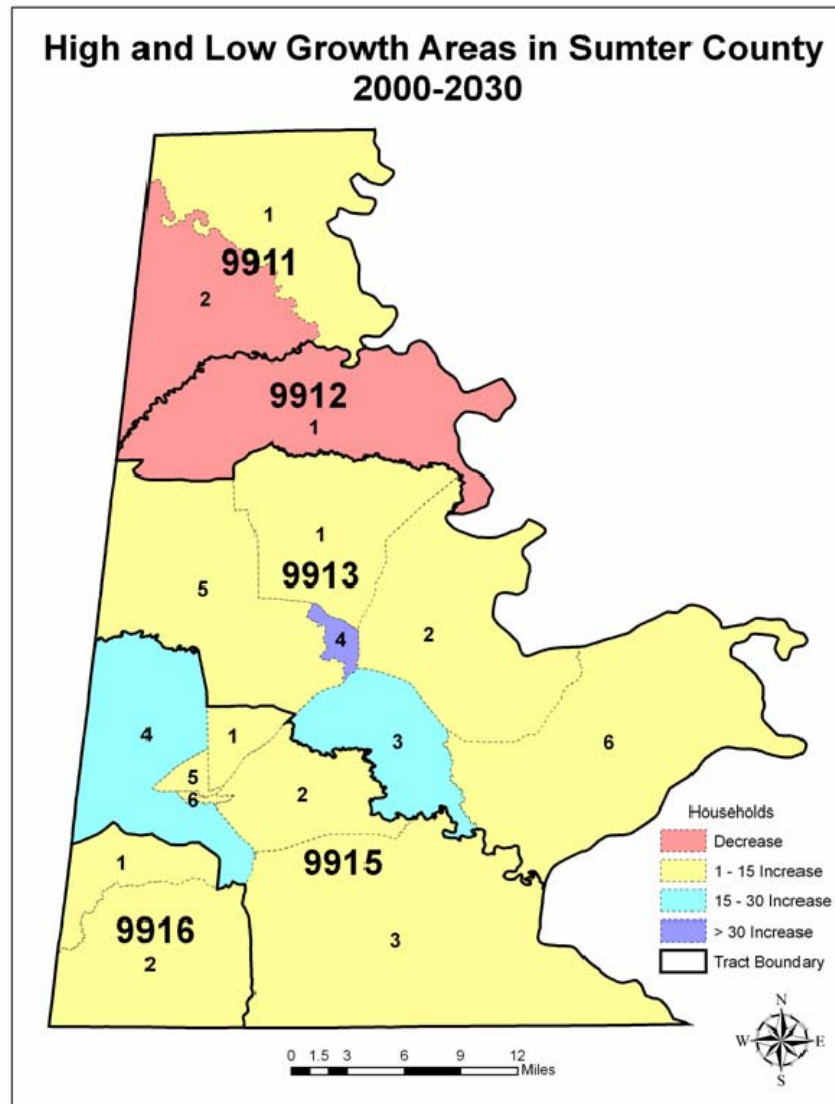
Population Projections – Marengo County



Population Projections – Perry County



Population Projections – Sumter County



Next Steps

- ◆ Corridor Assessment
- ◆ Complete Existing Condition Review
- ◆ Impact Analyses
- ◆ DEIS and FEIS Contributions
- ◆ Complete Socioeconomic Analysis